



Technical Specification | Tank Pumps

Hot Water Heavy Duty

Part No: FP2132

ASPEN-07/08

Dimensions:

Height: 160mm
Width: 355mm
Depth: 320mm
Weight: 7kg

Power Supply:

Pump rating: 230V AC, 1.1A
Alternative voltages available

Electrical Connections:

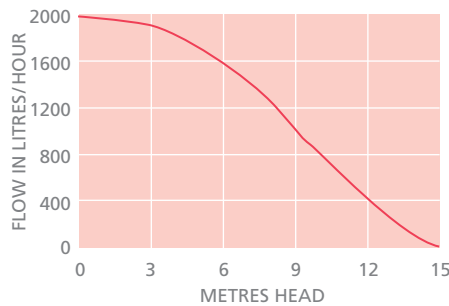
Brown: Live
Blue: Neutral
Green/yellow: Earth
2 x Black: Safety switch

Other Features:

- 2 metres connecting cable
- Tank capacity: 5 litres
- Pre-wired safety switch
230V, 4A max
- Max. water temp: 100°C
- 2x non-return check valves
- 2 inlet positions: 40mm \varnothing
- Outlet size: 15mm

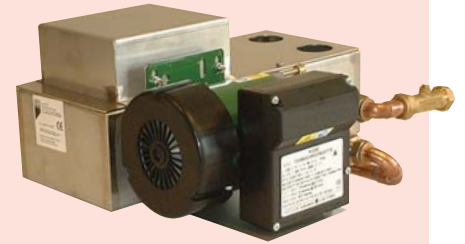
Performance:

- Water flow rate:
1800 litres per hour
- Maximum discharge head:
15 metres



Service Guide:

Flush the pump thoroughly with anti-bacterial wash every 6 months to avoid sludge build-up in the pump housing.



The Hot Water pump is designed to collect hot water from dehumidifier drain down cycles and normal condensate water from any associated air conditioning or boiler systems.

The internal pre-wired safety float is a low current switch to stop the drain down cycle in the unlikely event of pump failure. The pump is operated via internal float switches.